

## HAMLET DEVELOPMENT COMMITTEE (HDC)

HDC is a citizen collective which comprises of members of the respective hamlets to work for the progress of their respective hamlets.

### Key Features

- Comprises of 8- 14 members inclusive of female members
  - Unanimously selected by the community members
  - They meet twice a month to discuss the development issues.
  - They raise the matters related to disaster concerns of their respective hamlets in the Gram Sabha meetings for integration of the hamlet plans
  - They monitor the progress of development plans in their hamlets
  - They shall regularly update their Hamlet Disaster Risk Reduction Plan
  - They work together on advocacy issues related to accessibility and availability of entitlement rights.
- An altogether 45 HDCs comprising of 479 members have been formed in 50 hamlets of the project area.

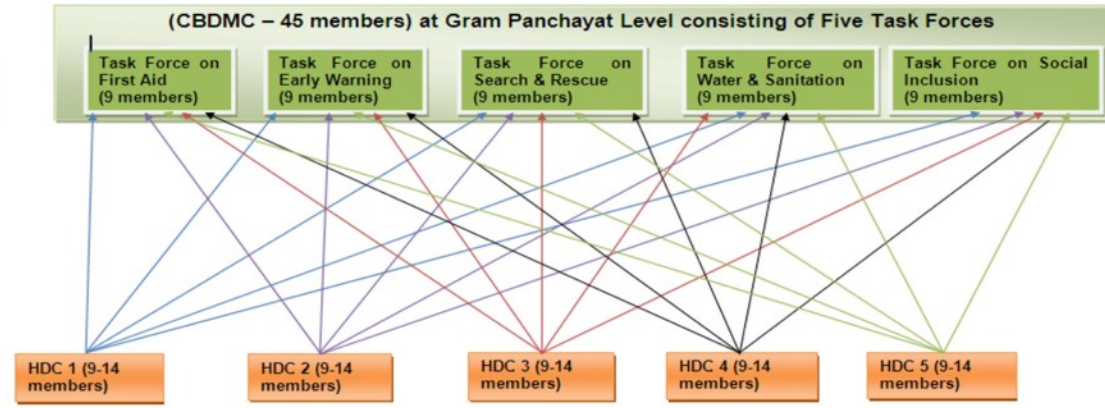
## COMMUNITY BASED DISASTER MANAGEMENT COMMITTEE (CBDMC)

CBDMC is a citizen collective at Panchayat level and includes 5 task forces comprising of 9 members in each task force. These task force consists of:

### Key Features

- Early Warning, Search & Rescue, First Aid, WATSAN and Social Inclusion.**
- Each task force comprises of members of HDC elected by the community based on their competencies and have registered themselves to act voluntarily at the time of emergencies in coordination with the local government administration. —**
- The CBDMC is responsible for the management and updation of their contingency plans for Disaster Management and coordination with government authorities to implement the plans in their panchayat.**

Illustration



Note: This is an example for 1 Panchayat